



# Lifting Points - for bolting - INOX-STAR eyebolt



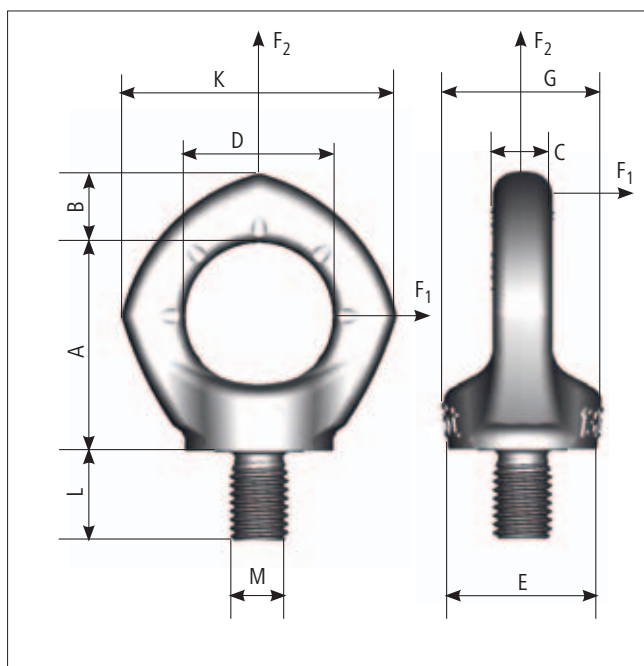
– stainless –

Complies with the machinery directives 2006/42/EG



MO  
075139

**4** SAFETY  
FACTOR 4:1  
LOADABLE IN  
ANY DIRECTION



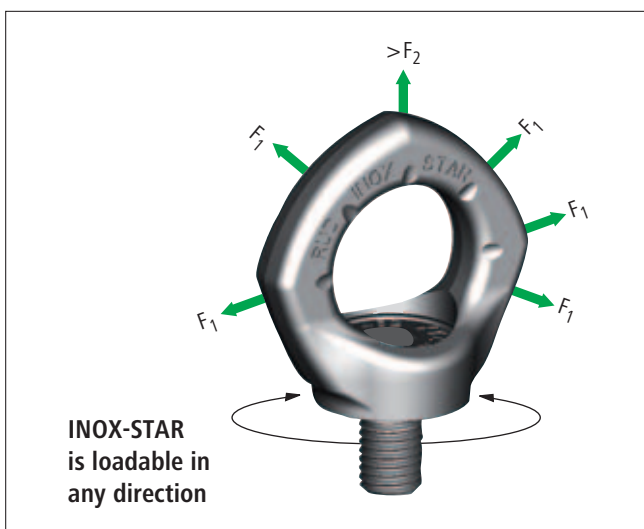
Type	Rated load		A	B	C	D	E	G	K	L	M	SW	Weight	Ref.-No.
	$F_1$ (t)	$F_2$ (t)	mm	mm	mm	mm	mm	mm	mm	mm			kg	
INOX-STAR M12	0.5	1.2	43	14	10	30	30	32	56	18	M12	8	0.2	7993835
INOX-STAR M16	1.0	2.4	50	16	14	35	35.5	38	65	24	M16	10	0.3	7993836
INOX-STAR M20	2.0	3.6	57	19	16	40	41	46.5	74	30	M20	12	0.5	7993837
INOX-STAR M24	2.5	5.2	70	24	19	48	50	56	92	36	M24	14	0.9	7993838

## INOX-STAR eyebolt

– stainless – 50 % more than DIN with no directional restrictions!

- Pentagonal shape – significantly different to the DIN 580 eyebolt.
- Turns through 360°. Can be set in the direction of the load.
- Clear statement of rated load  $F_1$  for the unfavourable load range. Safety factor 4 : 1.
- Forged eye body.
- Material of eye body and screw: 1.4462, duplex steel (high durability in sea water and in environments with high chlorine ion concentrations).
- 100 % crack-tested
- Captive mounted bolt.
- Patented wear marks on the eye body.
- Tighten hand-tight when mounting with hexagonal wrench or adapter piece. Do not use an extension.
- The INOX-STAR must be able to be turned through 360° when screwed in.
- Maximum countersink of the threaded hole = Nominal diameter of thread

**Notice:** Follow the Instructions for use!



- Set in the direction of force before loading.
- Component protected under patent law: European patent EP 654611.