



Lifting Points - for bolting - Load Ring bolted - VLBG -

– ...will turn 360° –



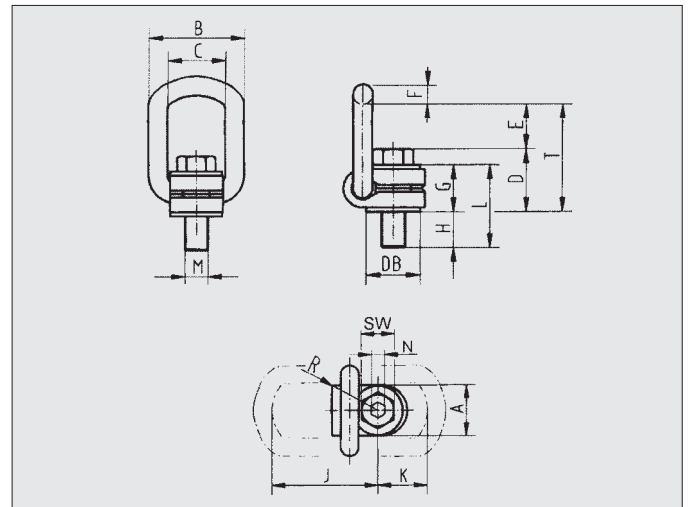
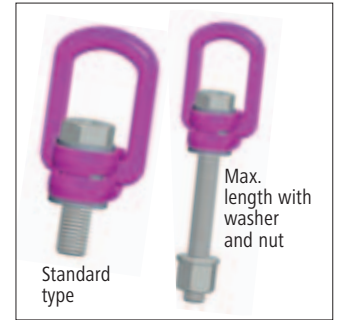
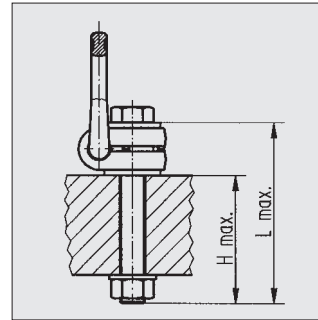
Complies with the machinery directives 2006/42/EG

**4 SAFETY
FACTOR 4:1
LOADABLE IN
ANY DIRECTION**

-40° C



360°
drehbar



Type	WLL (t)	A	B	C	D	E	F	G	H stand.	H max.	J	K	L stand.	L max.	M	N	SW	R	T	DB	Weight kg	Torque	Ref.-No. (Standard)	Ref.-No. Vario with washer and nut
VLBG 0.3t M 8	0.3	30	54	34	35	40	10	29	11	76	75	45	40	105	8	5	13	32	75	24	0.3	30 Nm	8500821	8600280
VLBG 0.63t M 10	0.63	30	54	34	36	39	10	29	16	96	75	45	45	125	10	6	17	32	75	24	0.32	60 Nm	8500822	8600281
VLBG 1t M 12	1	32	54	34	37	38	10	29	21	116	75	45	50	145	12	8	19	32	75	26	0.33	100 Nm	8500823	8600382
VLBG 1.2t M 14	1.2	33	56	36	46	39	13.5	36	—	34	86	47	—	70	14	10	24	38	85	30	0.55	120 Nm	—	8600399
VLBG 1.5t M 16	1.5	33	56	36	46	39	13.5	36	24	149	86	47	60	185	16	10	24	38	85	30	0.55	150 Nm	8500824	8600383
VLBG 2.0t M 18	2.0	50	82	54	55	55	16.5	43	—	47	113	64	—	90	18	12	30	48	110	45	1.3	200 Nm	—	8600384
VLBG 2.5t M 20	2.5	50	82	54	55	55	16.5	43	32	187	113	64	75	230	20	12	30	48	110	45	1.3	250 Nm	8500826	8600385
VLBG 4t M 24	4	50	82	54	58	67	18	43	37	222	130	78	80	265	24	14	36	48	125	45	1.5	400 Nm	8500827	8600386
VLBG 4t M 27	4	60	103	65	78	69	22.5	61	39	239	151	80	100	300	27	17	41	67	147	60	3.1	400 Nm	7983658	8600387
VLBG 5t M 30	5	60	103	65	80	67	22.5	61	49	279	151	80	110	340	30	17	46	67	147	60	3.3	500 Nm	8500828	8600388
VLBG 7t M 36 ▲	7	60	103	65	72	74	22.5	55	52	—	151	80	107	—	36	—	55	67	146	60	3.4	700 Nm	8500829	—
VLBG 8t M 36	8	77	122	82	100	97	26.5	77	63	223	205	110	140	300	36	22	55	87	197	70	6.2	800 Nm	7983553	8600289
VLBG 10t M 42	10	77	122	82	103	94	26.5	77	73	273	205	110	150	350	42	24	65	87	197	70	6.7	1000 Nm	7983554	8600290
VLBG 15t M 42	15	95	156	100	113	109	36	87	63	263	230	130	150	350	42	24	65	100	222	85	11.2	1500 Nm	7982966	8600291
VLBG 20t M 48	20	95	156	100	117	105	36	87	73	303	230	130	160	390	48	27	75	100	222	95	11.6	2000 Nm	7982967	8600292
LBG(3) M 16 RS 1t	1	50	85	50	45	43	16.5	38	25	—	95	45	63	—	16	—	24	46	88	30	1	100 Nm	62086	Stainless
LBG(3) M 20 RS 2t	2	50	85	50	46	42	16.5	38	27	—	95	45	65	—	20	—	30	46	88	30	1.1	200 Nm	62813	Stainless
Attention: the stainless load ring is not suitable for use in chloride media (e.g. indoor swimming-pools)!																								
VLBG-Z 0.63t 3/8"-16UNC	0.63	30	54	34	36	39	10	29	16	96	75	45	45	125	3/8"	1/4"	9/16"	32	75	24	0.32	60 Nm	—	8600440
VLBG-Z 1t 1/2"-13UNC	1	32	54	34	38	37	10	29	22	121	75	45	50	150	1/2"	5/16"	3/4"	32	75	26	0.33	100 Nm	8502349	8600441
VLBG-Z 1.5t 5/8"-11UNC	1.5	33	56	36	46	38	13.5	36	24	148	87	47	60	184	5/8"	3/8"	15/16"	38	85	30	0.55	150 Nm	8502350	8600442
VLBG-Z 2.5t 3/4"-10UNC	2.5	50	82	54	56	54	16.5	43	28	187	113	64	71	230	3/4"	1/2"	1 1/8"	48	110	45	1.3	250 Nm	8502351	8600443
VLBG-Z 2.5t 7/8"-9UNC	2.5	50	82	54	58	52	16.5	43	27	211	113	64	70	254	7/8"	1/2"	1 5/16"	48	110	45	1.3	300 Nm	8502352	8600444
VLBG-Z 4t 1"-8UNC	4	50	82	54	61	64	18	43	41	211	130	78	84	254	1"	9/16"	1 1/2"	48	125	45	1.5	400 Nm	8502353	8600445
VLBG-Z 5t 1 1/4"-7UNC	5	60	103	65	80	64	22.5	61	41	279	151	80	102	340	1 1/4"	5/8"	1 7/8"	67	147	60	3.3	500 Nm	8503187	8600446
VLBG-Z 8t 1 1/2"-6UNC	8	77	122	82	100	97	26.5	77	39	270	205	110	116	347	1 1/2"	7/8"	2 1/4"	87	197	70	6.2	800 Nm	—	8600447
VLBG-Z 20t 2"-4 1/2UNC	20	95	156	100	117	105	36	87	77	303	230	130	164	390	2"	1 1/8"	3"	100	222	95	11.6	2000 Nm	—	8600448

▲ = Special construction – bolt cannot be changed!

VLBG Load Ring will turn 360°, adjustable in pull direction. Load ring foldable, full WLL in any load direction, surface pink powder coated.

BG = German Employers Requires:
Use only the supplied bolts.

The max. lengths of the RUD - bolts are adjusted in such a way that if a hex-head-shaped nut (DIN EN ISO 7042) is used, assemblies of material thickness of approximately 8 *M (for M8 - M30) and 5 *M (for M36 - M48) can be realised respectively. In case of flipping fixtures dies and molds, under full load, we recommend to use our double ball bearing power point collection.

Subject to technical alternations!



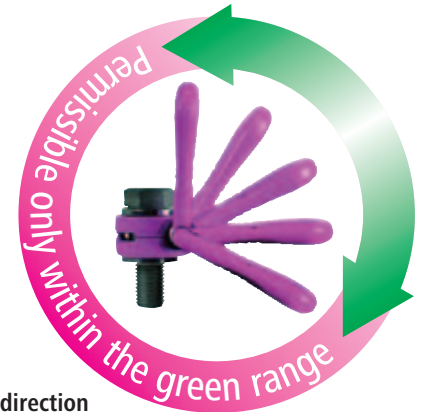
Lifting Points - for bolting - Load Ring bolted - VLBG -

– ...will turn 360° –

Complies with the machinery directives 2006/42/EG



- RUD Universal bolts and nuts for VLBG - 100 % crack detected!
- The hex-head-bolt is suitable for internal and external wrench mounting for types with metric threads.
- **Surface protection:**
CORRUD - DT - at least 20 times better corrosion protection than zinc plating (except for the spot face) after length shortening.
- Thread over whole bolting length „H“.
- Bolt is held captive in the body. Replace only with the same quality class bolt.
- Clear identification at the bolt head: RUD, thread size, quality class.
- **The load ring must be installed perpendicular to the work piece. The work piece must be flat, providing complete contact for the load ring bushing.**
- **Load ring has to be adjusted in pull direction, free to move, and must not support on edges.**
- Use acc. to hints for installation and by trained persons (see page 39).
- The lifting attachment must be free to move when attached to the load ring!
- Regular inspections should be carried out by a competent person (BGR 500).
- Load should not be turned during lifting.



Why are RUD-Lifting Points "Pink"?

Epoxy powder coating in colour "pink".

Special RUD products are coated with a fluorescent pink powder coating (Patent). This coating is used for example as a heat indicator: With temperature increase the pink colour changes permanently from beige into brown and turns finally when exceeding a temperature of 380° Celsius into black. In addition to that bubbles on the surface will appear. See page 38 for necessary WLL reduction and max. allowed temperature!

