



Lifting Points - for welding - Load Ring - VLBS -



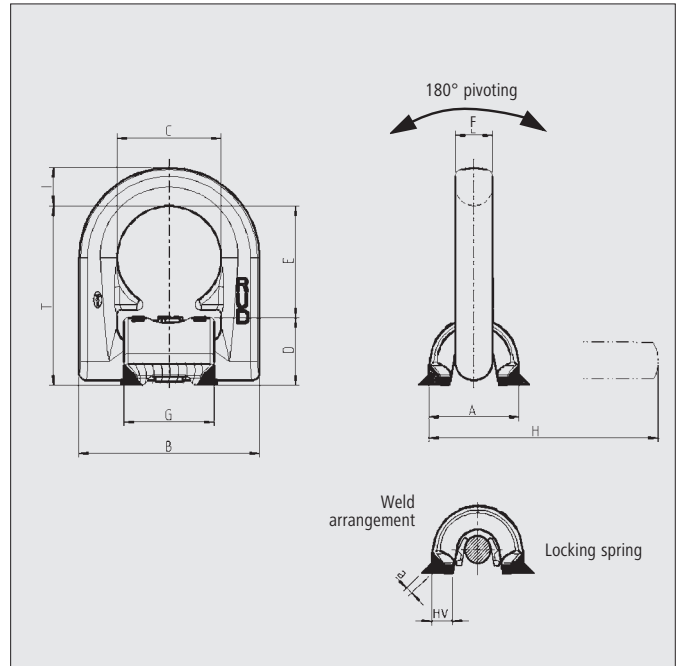
Complies with the machinery directives 2006/42/EG

**4 SAFETY
FACTOR 4:1
LOADABLE IN
ANY DIRECTION**

-20° C



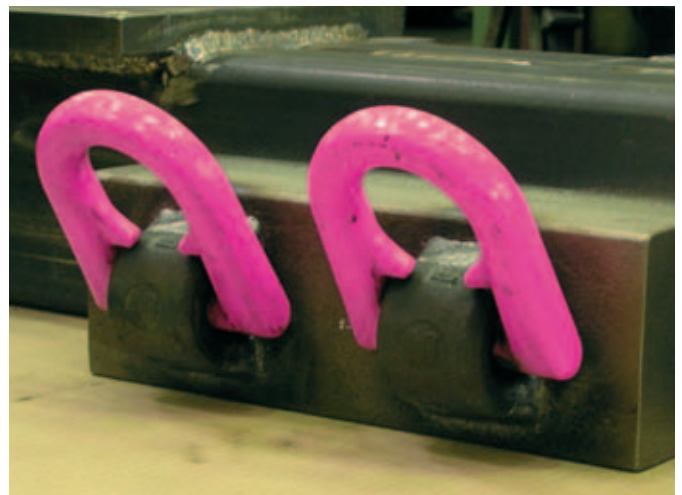
MO
075107



Type	WLL (t)	A	B	C	D	E	F	G	H	I	T	Weld HV+ Δ	Weight (kg)	Ref.-No. captive complete	Ref.-No. without spring
VLBS 1.5	1.5	33	66	38	25	40	13.5	33	87	14	65	HV 5 + 3	0.35	79 93 035	79 93 115
VLBS 2.5	2.5	36	77	45	27	48	13.5	40	97	16	75	HV 7 + 3	0.5	79 94 830	79 95 346
VLBS 4	4	42	87	51	31	52	16.5	46	112	18	83	HV 8 + 3	0.8	79 93 036	79 93 116
VLBS 6.7	6.7	61	115	67	44	73	22.5	60	157	24	117	HV 12 + 4	1.9	79 93 037	79 93 117
VLBS 10	10	75	129	67	55	71	26.5	60	173	27	126	HV 16 + 4	2.9	79 93 040	79 93 118
VLBS 16	16	95	190	100	69	105	26	90	243	40	174	HV 25 + 6	6.8	--	79 93 041

- The VLBS forged out of high tensile CrNiMo - steel with an innovative design offers many advantages.
 - up to 50 % higher WLL.
 - the two protective supporting lugs (inside the load ring) are patented and they improve the connection with the attachment in addition they protect the clamping spring.
 - The support effect is exceptional, especially if the ring is side loaded or the lifting point is welded on an uneven work piece.
 - Pink powder coating, a VIP recognition attribute and a heat indicator (refer to page 15).
- Easy and quick to weld assembly.
- Compact and shapely design.
- High dynamic and static strength.
- Forged suspension ring acc. to EN 1677, grade 80, electromagnetic crack detected, pink powder coated; meets the requirements of the appropriate safety authorities.
- The welding block has been forged of material 1.0570 (St 52-3) and clearly stamped with the permissible WLL. The patented distance lugs assist in achieving the correct root weld.
- Important: By the special weld design (continuous HV), the requirements of DIN 18800 are fulfilled, i.e., a closed weld avoids corrosion and thus suitable for outdoor use.

- **Distinctive features for type LBS-U:** A protected spring maintains the load ring in every required position. The parts are assembled in such a way that they remain captive.
- The spring reduces vibration induced noise.



Subject to technical alternations!



Lifting Points - for welding - Load Ring - for special usage



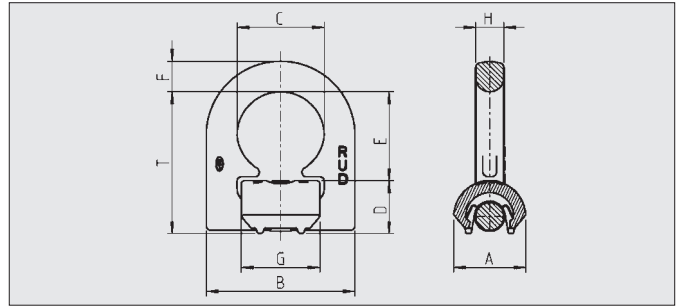
Complies with the machinery directives 2006/42/EG

VLBS-U-LT for low temperature



-45° C

- Load ring VLBS-U-LT for low temperature as far as 45 °C
- Analog to a conventional VLBS-U plus useable for low temperatures



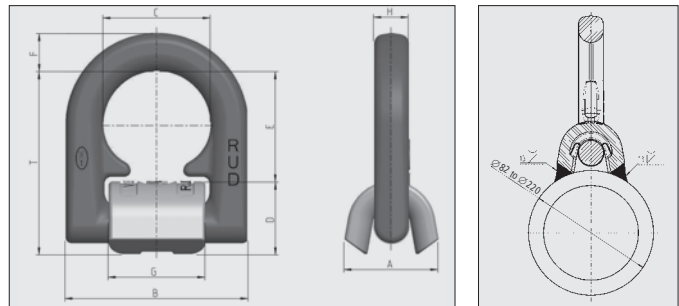
Type	WLL (t)	A	B	C	D	E	F	G	H	T	Weight (kg)	Ref.-No.
VLBS-U-LT 2.5 t	2.5	36	77	45	27	48	13	40	13.5	75	0.5	79 03 522
VLBS-U-LT 4 t	4	42	87	51	32	52	18	46	16.5	84	0.8	79 03 400
VLBS-U-LT 6.7 t	6.7	61	115	67	44	73	24	60	22.5	117	1.9	79 03 684
VLBS-U-LT 10 t	10	75	129	67	55	71	26.5	60	26	126	2.9	79 03 135

VLBS-P for pipes



-20° C

- For tubes with an outside diameter of 82 - 220 mm.
- For bigger tube diameters, the standard VLBS can be used.



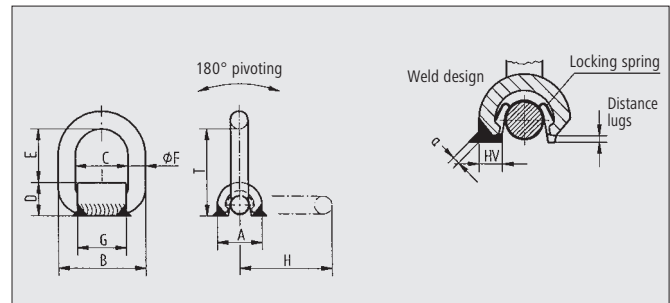
Type	WLL	A	B	C	D	E	F	G	H	T	Weight	Ref.-No. complete
VLBS-P 4 t	4 t	45	87	51	35	52	18	46	16.5	87	0.8 kg	79 95 472
VLBS-P 4 t	8800 lbs	1 25/32"	3 7/16"	2"	1 1/64"	2 1/16"	23/32"	1 13/16"	32/32"	3 23/64"	1.75 lbs	79 95 472

LBS-RS-stainless



-100° C

Material No. 1.4571



Type	WLL (t)	A	B	C	D	E	∅ F	G	H	T	Weld HV+ Δ	Weight (kg)	Ref.-No.
LBS (1) RS 0.5	0.5	32	65	36	25	39	13.5	33	69	64	HV 5 + 3	0.3	51 630*
LBS (3) RS 1	1	42	85	50	31	50	16.5	46	87	81	HV 8 + 3	0.6	51 740*
LBS (5) RS 2	2	61	110	65	44	72	22.5	60	125	116	HV 12 + 4	1.6	53 377

* Without locking spring

LBS () RS-version!

Welding block and suspension ring made of 1.4571, recommendable welding electrode e.g. Castolin ARC A Mo 90009N

Application examples:

1.4571 = in welded condition resistant against inner crystalline corrosion - in permanent operation up to 400°C.

The chemical resistance and resistance against pitting by chloride media has increased due to the Mo contents. The material 1.4571 is widely used in the chemical industry, petroleum, coal-tar, chemical and textile industries.