



Lifting Points - for bolting - »STARPOINT« - VRS -

– ...the absolute **STAR** among eye bolts –



Complies with the machinery directives 2006/42/EG

Shape: Star shaped - clear distinction from standard eye bolt DIN 580.

Colour: Striking fluorescent pink powder coating

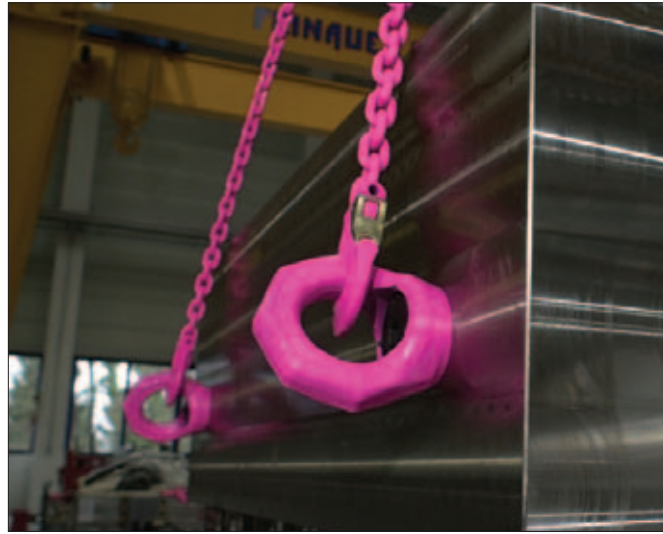
Marking: Clear indication of WLL (in metric tonnes and lbs) for side load direction F (not allowed with standard eye bolt).

- Forged material 1.6541, alloy quenched and tempered, 100 % electromagnetic crack detected according to EN 1677-1

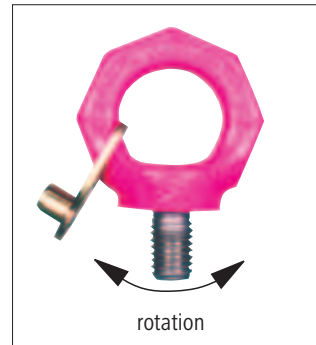
STARPOINT Type VRS-F

Type VRS-F includes the installation tool/STAR KEY. This STARPOINT comes with an integrated installation tool. Just engage the tool into the hexagon socket screw – tighten by hand – disengage tool. STARPOINT can be adjusted 360°. Type VRS without STAR KEY can be assembled by using a hexagon key or Allen wrench.

Alternative-Tip:
Special RUD hexagon socket wrench is available upon request.

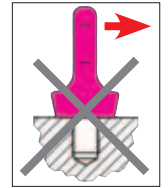


VRS-F fixed



rotation

- **Safety factor 4 : 1.**
- Workpiece material must conform to minimum steel quality S235JR/St 37. (1.0037).
- Maximum countersink of tapped hole = nominal thread diameter.
- Provide plane seat of the special hexagon bolt.
- VRS must be able to rotate by 360° in bolted condition.
- Adjust to load direction before loading.
- Component protected by patents: Europe patent EP 654 611. US patent 5690457.
- Specifically engineered-Grade 10.9 captive hexagon socket screw.



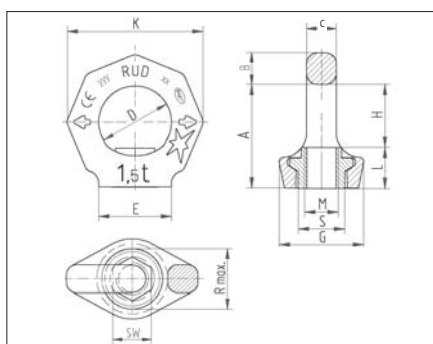
Simply engage the hexagon socket bolt with the star profile key – use your fingers to respectively tighten or untighten the arrangement. Disengage the key before you hook in the lifting mean. Do not use an elongation piece.

»STARPOINT«-eye nut

– VRM –



Complies with the machinery directives 2006/42/EG



- The body of the STARPOINT nut must be turnable 360° in bolted condition. Adjust in pull direction before attaching the sling means.
- A plane support (E) for the eye nut at the bolt-on surface must be guaranteed. The nut thread must be engaged to 100 % with the bolt thread.
- Sizes of VRM - see drawing VRS-StarPoint, page 16. Size „L“ corresponds with the minimum length of the bolt thread.
- In case of flipping fixtures dies and molds, under full load, we recommend to use our double ball bearing power point collection.
- The given WLL is only valid in connection with threaded bolts of at least quality class 10.9.

Attention: Refer to RUD user instructions!

4 SAFETY FACTOR 4:1
LOADABLE IN ANY DIRECTION

-40° C

Type	WLL (t)	Weight (kg)	A	B	C	D	E	G	H	K	L	M	R _{max}	S	SW	Ref.-No.
VRM-M6	0.1	0.06	28	9	7	20	23	28	16	37	11	6	16	13	9	7900786
VRM-M8	0.3	0.1	34	11	8.5	25	25	28	20	47	14	8	20	16	12	7992989
VRM-M10	0.4	0.1	34	11	8.5	25	25	28	20	47	14	10	20	16	12	7990311
VRM-M12	0.75	0.2	42	13	10	30	30	34	25	56	17	12	24	20	14	7990312
VRM-M16	1.5	0.3	51	15	14	35	35.5	40	30	65	21	16	30	22	19	7990314
VRM-M20	2.3	0.5	57	17	16	40	40	50	34	75	23	20	37	29	24	7990315
VRM-M24	3.2	0.9	69	21	19	48	50	60	40	90	29	24	45	35	30	7990316
VRM-M30	4.5	1.5	86	26	24	60	60	75	52	112	34	30	56	44	36	7993008